

Microsoft® Project 2010

- Über MS Project
- Problemstellung
- Lösungsansatz
- Methode

MS Project:

- Projektmanagementsoftware
- Portfoliomanagement, Terminmanagement, Multiprojektmanagement, Zeiterfassung, zentrale Ressourcenplanung, Dokumentenmanagement...
- Gratis für Studenten

Problemstellung:

- Zu viele Termine, Daten, Mitarbeiter, Deadlines...

Lösungsansatz

- Zusammenfassen der Inhalte und Bereitstellung für alle Mitarbeiter

Methode

- Verknüpfen von Kalender, Arbeiterkartei, Ressourcenübersicht, Instantmessaging u.s.w. in einem Programm

Gantt Chart Tools

Project View Format

Calibri 10

0% 25% 50% 75% 100%

Mark on Track

Respect Links

Inactivate

Manually Schedule

Auto Schedule

Move Task

Inspect Task

Task Mode

Task

Summary

Milestone

Deliverable

Task Information

Notes

Details

Add to Timeline

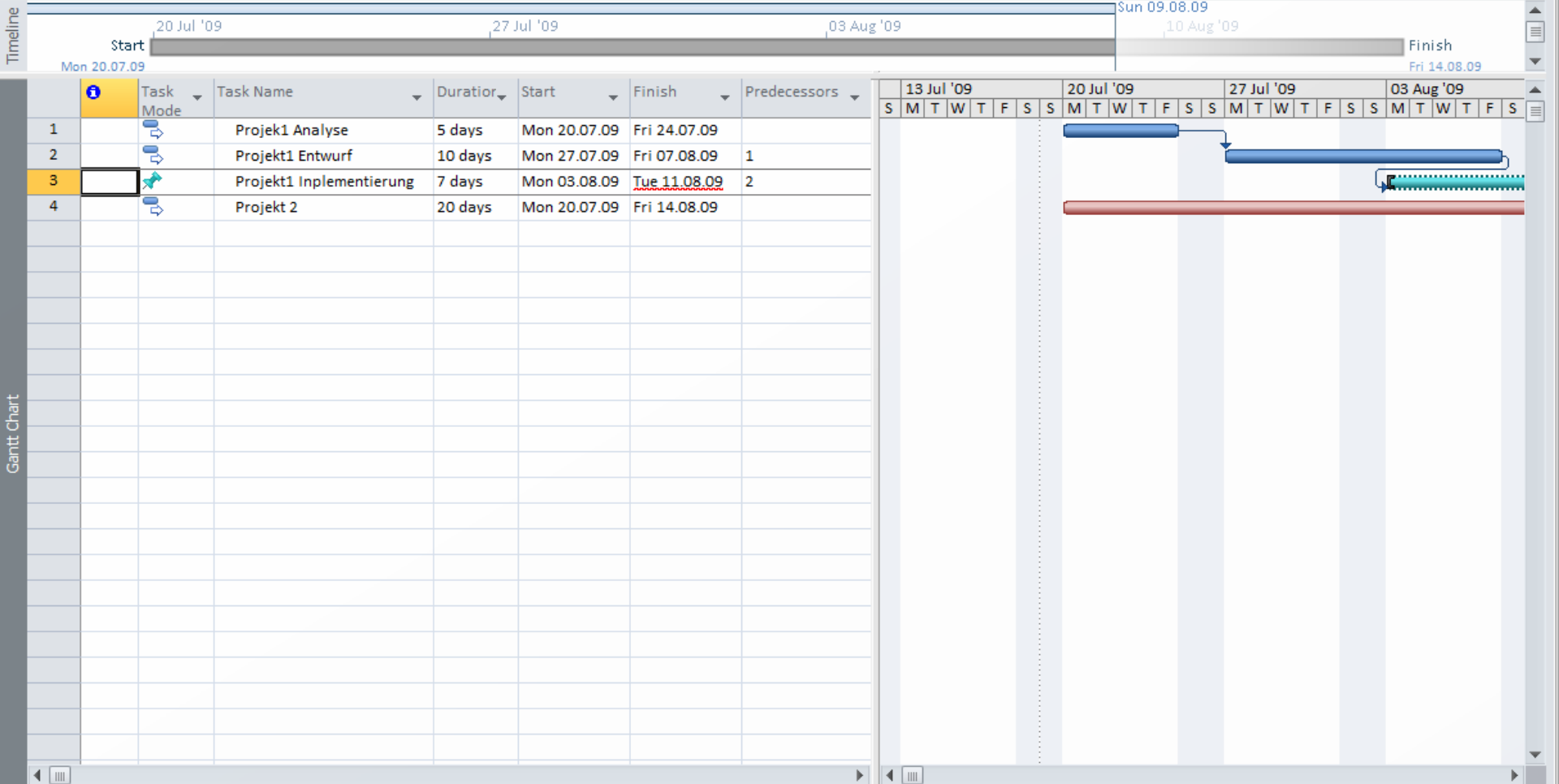
Find

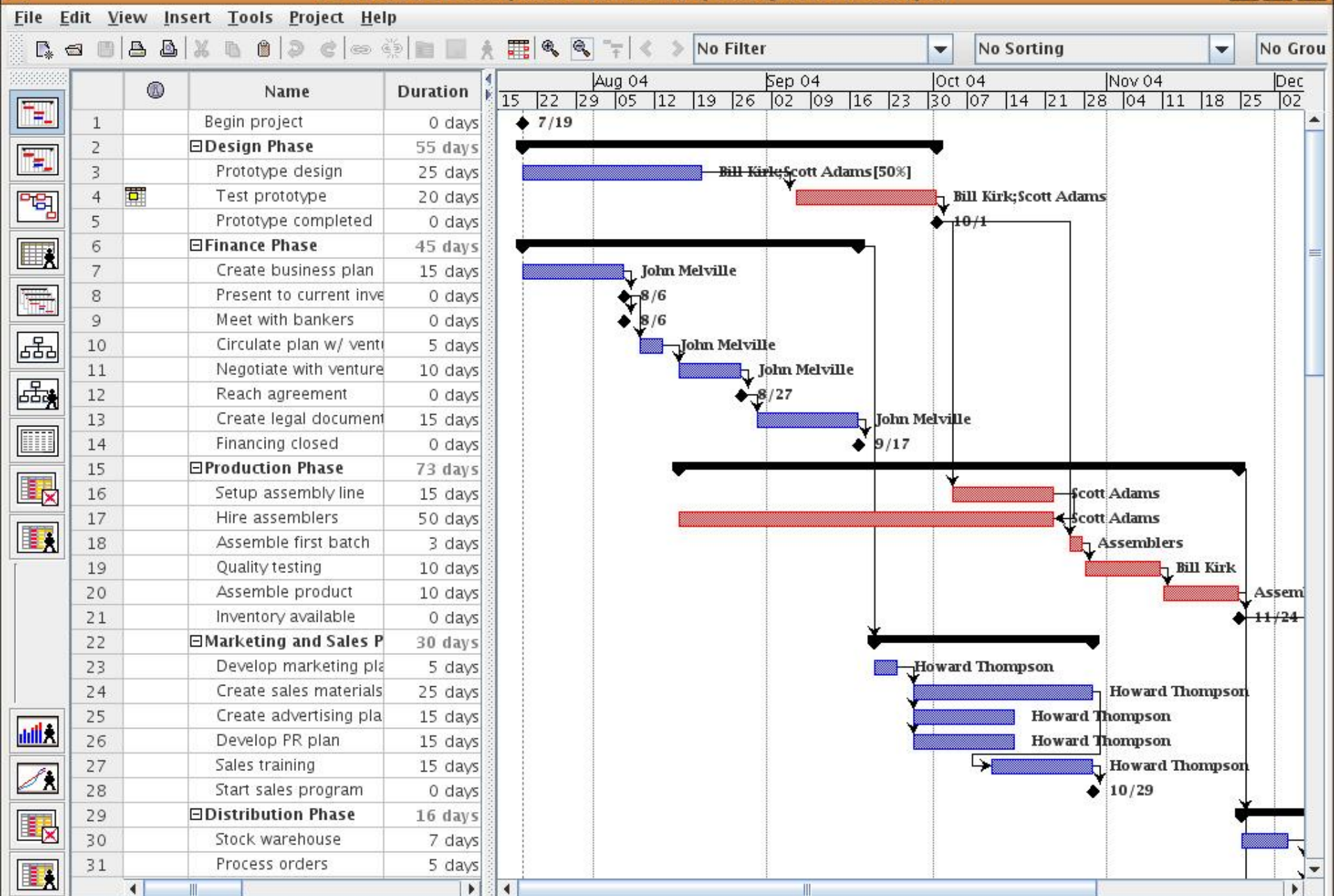
Clear

Fill

Scroll to Task

Editing





File Home Insert Design Data Process Review View Org Chart

Link Data to Shapes Automatically Link Refresh All

Data Graphics Insert Legend

Shape Data Window External Data Window

Shapes

More Shapes

Quick Shapes

Organization Chart Sh...

Organization Char...

- Executive
- Manager
- Position
- Consultant
- Vacancy
- Assistant

Team frame

- Staff
- Multiple shapes
- Three positions

No Data Graphic

Available Data Graphics

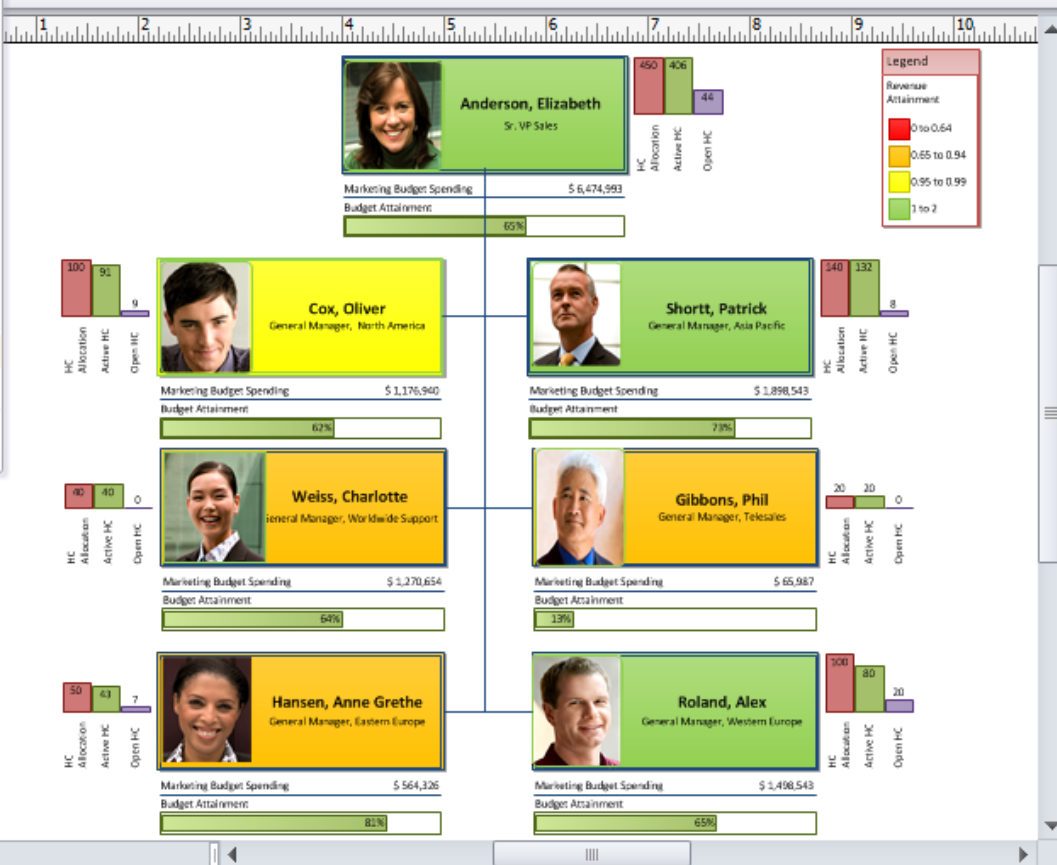
Create New Data Graphic...

Edit Data Graphic

Apply to

Create New Data Graphic

Create a data graphic based on data you have entered in the Shape Data window or imported into the diagram.



Page-1 Dynamic Diagram

Name	Title	Revenue	Revenue Attainment	Marketing Budget Spending	Budget Attainment	HC Allocation
Roland, Alex	General Manager, Western Europe	125603845	1.12	1498543	0.65	100
Weiss, Charlotte	General Manager, Worldwide Support	4654322	0.91	1270654	0.64	40
Cox, Oliver	General Manager, North America	244095766	0.06	1176040	0.62	100

External Data

Sheet1

Fazit

- + Umfangreich
- + Nützlich bei großen Projekten
- Kompliziert
- Lohnt sich bei kleinen Projekten kaum

Microsoft®

Project 2010